



SEMINARHOF  
**TRATZBERG**





# CONTENT

Our Seminarhouse	4
Philosophy	5
Equipment	6
Good to know	7
Included services and prices	8
Catering	10
Seating charts	14
Impressions – Seminarhouse	15
Tratzberg Castle	16
Excursion tips around Seminarhof Tratzberg	19
Location & Access	22
Contact	23



## OUR SEMINARHOUSE

In the Tyrolean Inn Valley, not far from Schwaz, right below Tratzberg Castle, lies our SEMINARHOF, designed in a **biological construction**. This **place of power** offers the ideal retreat for all kinds of courses, seminars, lectures and conferences.

The light-flooded **seminar room** opens the view to unspoiled nature, to the mountains of the southern foothills of the pre-alps and is at the same time inspiration to see and learn something new. The modern, rurally clear ambience, with a lot of wood in the whole house, contributes to physical well-being and general relaxation. The **terraces** and the **garden** are the focal point for evening conversations in summer.

The **Schlosswirt**, the restaurant located next door, may provide your catering.

**Good transport links** (connection to the Inntal highway at 4 km - BB/ICE/RJ train station Jenbach at 1.5 km) is an additional plus for our house.



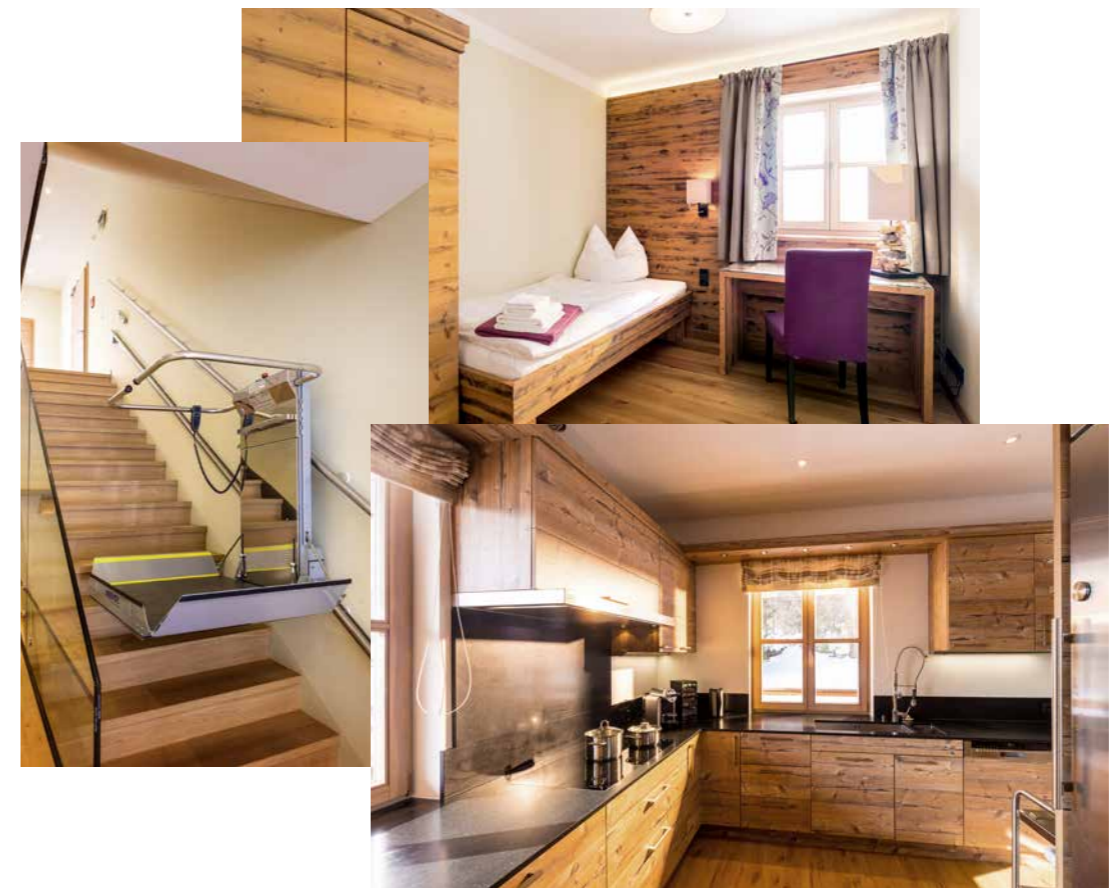
## PHILOSOPHY

Where once stood an old manor - the 'Gassenhof' - is now our modern and at the same time cozy seminar house. This was planned with great attention to detail in **Feng Shui** compliant and organic construction. With the completion in 2013, not only a house for seminars was created here, but rather a **place of power** in the midst of nature, which offers an ideal atmosphere.

The brother of Ulrich Count Goess-Enzenberg was responsible for the planning of the house. In close cooperation and according to the ideas of Countess Katrin Goess-Enzenberg, the architect Karl-Georg Goess from the architectural office sglw Silbermayr, Goess, Lambert and Welzl, Vienna, designed the seminar house in prefabricated wooden construction.

With profound knowledge of effective, authentic Feng Shui and many years of experience, Mrs. Sabine Veldung was on hand to advise the Countess during the planning and construction of the house. Thus, a **place of inspiration** was created.

**We are happy to welcome you in our house, in the context of your seminar or conference. Experience the power that emanates from this place. We are looking forward to seeing you!**



# EQUIPMENT

## SEMINAR ROOM

- 1 seminar room (size approx. 125 m²)
  - with terrace
  - Beamer incl. screen
  - Microphone/headset with loudspeaker
  - Sound system
  - Number of people: up to 80 with cinema seating, up to 50 at tables

*The seminar room can also be rented by day - without overnight stay!*

## MISCELLANEOUS

- Stair-lift for wheelchair
- 4 flipcharts and 4 pin boards
- 22 yoga mats and 25 cushions
- separate office room with b/w printer
- 80 chairs and 25 tables
- parking spaces

## SEMINAR HOUSE

- 10 single rooms with modern bathroom
  - including 1 single room with bathroom on the first floor barrier-free or suitable for wheelchair
- 6 double rooms with modern bathrooms
  - 4 with single beds
  - 2 with double beds
- 1 breakfast room or lounge
  - for approx. 25 - 30 people on the ground floor
  - with fireplace and terrace
- modern, well-equipped kitchen
  - catering can be booked (for a separate charge)

*Other hotels and guesthouses for additional seminar participants are located about 1.5 km away. For addresses and further information, please contact us!*

# GOOD TO KNOW

## GENERAL INFORMATION

- Check out | pick up of the conference setup on the last day until 5:00 pm at the latest
- All prices are excluding 20% VAT
- Our seminar house is a **non-smoking house**. Ashtrays are available on the terraces

## BARRIER-FREE

- Stair lift to the seminar room
- Barrier-free toilet
- 1 room with bathroom is suitable for wheelchair users and equipped barrier-free

## SERVICE AND SUPPORT STAFF

- We are happy to organize service and support staff for you on a temporary basis (e.g. for setting up and dismantling the conference setup) or for the entire period of the rental (daily flat rate)
- Price on request

## PARKING

- Parking in front of the seminar house is only allowed for the seminar organizer or for physically disabled persons as well as for delivery and pick-up of the conference set-up for a short time
- Seminar participants may use the official castle parking lot (distance: approx. 80m / wheelchair accessible) free of charge (signs: **P** for castle visitors)

## TRANSPORTATION SERVICE

- Special Taxi fares on request (applies for advanced booking)

## SEMINAR-HOUSE RENTAL

	INCLUSIVE	EXCLUSIVE
Use of the seminar room	✓	
Seminar room equipment <ul style="list-style-type: none"> <li>80 chairs (<i>simple folding chairs, black</i>)</li> <li>50 shell chairs (<i>in natural wood</i>)</li> <li>25 tables (<i>140x70 cm, natural wood</i>)</li> <li>1 beamer incl. screen, 4 flipcharts, 4 pin boards</li> <li>1 microphone with speakers   sound system</li> <li>25 yoga cushions &amp; 22 yoga mats (<i>160x80cm</i>)</li> </ul>	✓	
Use of separate office room with b/w printer	✓	
Use of the breakfast room with fireplace	✓	
Use of the terraces or garden	✓	
Use of the toilet facilities	✓	
Free WIFI use	✓	
Free parking spaces	✓	
Final cleaning	✓	
Use of the kitchen ( <i>in case of self-catering we charge a daily flat rate for the use of the kitchen equipment incl. electricity</i> )	✓	
Use of the 16 rooms <ul style="list-style-type: none"> <li>22 beds incl. bathrooms</li> <li>including bed linen and towels</li> </ul>	✓	
Catering		✗
Tourist tax ( <i>according to TVB</i> )		✗
Cleaning during the rental period ( <i>on request, possible for an extra charge</i> )		✗
Additional equipment		✗
Unloading & loading ( <i>e.g. delivery   pick-up</i> )		✗
Setting up of the conference setup ( <i>e.g. setting up tables, chairs, yoga cushions, etc.</i> )		✗
Disposal of garbage in case of self-catering		✗
Return of empties		✗
<b>Rental price per day (<i>minimum stay 2 days</i>)</b>		<b>from € 1.650,-</b>

## SEMINAR-ROOM RENTAL

	INCLUSIVE	EXCLUSIVE
Use of the seminar room	✓	
Seminar room equipment <ul style="list-style-type: none"> <li>80 chairs (<i>simple folding chairs, black</i>)</li> <li>50 shell chairs (<i>in natural wood</i>)</li> <li>25 tables (<i>140x70 cm, natural wood</i>)</li> <li>1 beamer incl. screen, 4 flipcharts, 4 pin boards</li> <li>1 microphone with speakers   sound system</li> <li>25 yoga cushions &amp; 22 yoga mats (<i>160x80cm</i>)</li> </ul>	✓	
Use of separate office room with b/w printer	✓	
Use of the breakfast room with fireplace	✓	
Use of the terraces or garden	✓	
Use of the toilet facilities	✓	
Free WIFI use	✓	
Free parking spaces	✓	
Final cleaning	✓	
Catering		✗
Additional equipment		✗
Unloading & loading ( <i>e.g. delivery   pick-up</i> )		✗
Setting up of the conference setup ( <i>e.g. setting up tables, chairs, yoga cushions, etc.</i> )		✗
Return of empties		✗
<b>Day event (<i>from 08:00 am to 06:00 pm</i>)</b>		<b>on request</b>
<b>Evening event</b>		<b>on request</b>

Prices excluding 20% VAT.  
Upon request, we can provide service or support staff between meals. Price on request.



# CATERING

With the **Schlosswirt Tratzberg**, which is located right next door, a special catering offer can be made to meet the needs of seminar participants. If desired, meals can be taken either in the cozy garden or in a separate room in the Schlosswirt.

We are happy to provide you with a selection of possible **catering packages** in advance. From meat to fish to vegetarian or vegan delicacies - in the Schlosswirt restaurant, our chef will treat you to culinary specialties. For our **overnight guests** we also offer a special „Overnight“ package, which allows you to start the day comfortably with a wholesome breakfast.

## SELF-CATERING

The entire catering can also be taken over or organized by the tenant. For the use of the kitchen we charge a **daily flat rate of € 100,-** (plus VAT). In the case of self-catering, the **final cleaning** of the kitchen will be taken over by us, against a **separate charge**.

## BEVERAGES

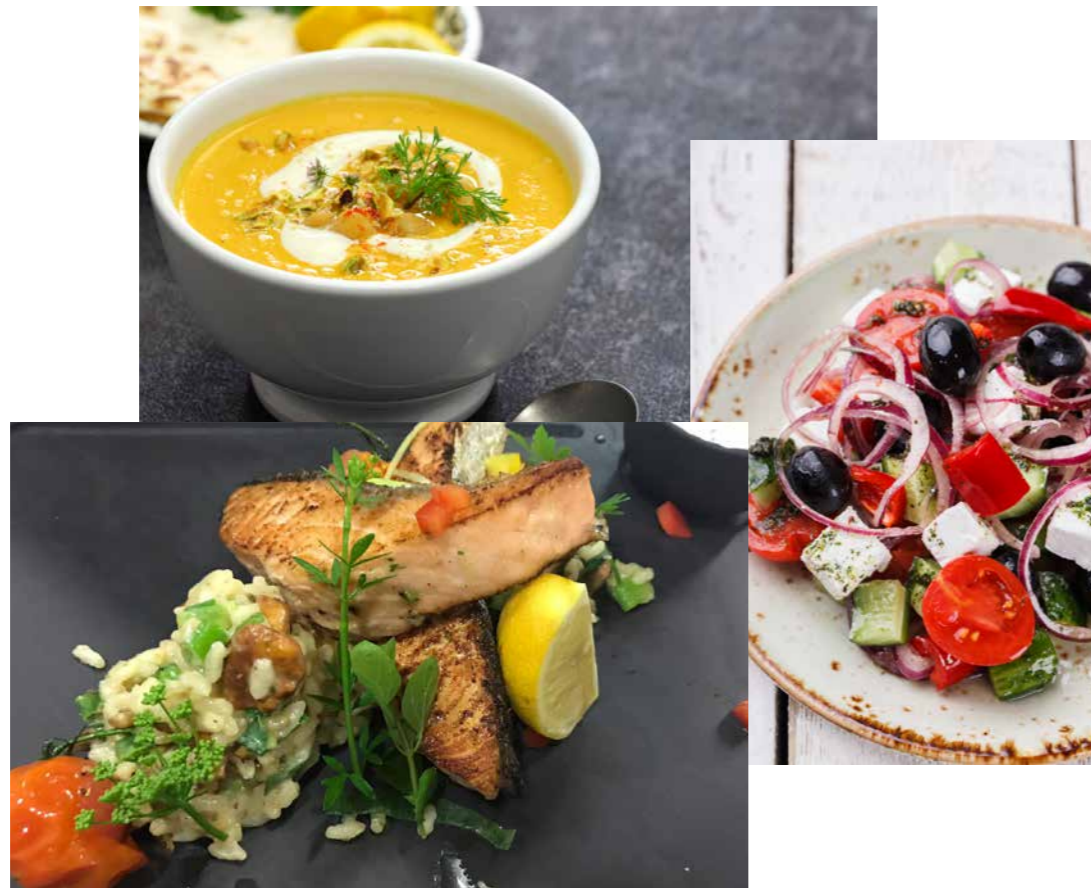
Beverages in the seminar house can be provided **on request**. The invoice is based on **actual consumption**.



# CATERING OPTIONS

▪ <b>Schlosswirt's breakfast</b>	<b>€ 18,00</b>
<hr/>	
▪ <b>Catered workshop breaks</b>	<b>€ 16,50</b>
Sweet & savory snacks including coffee, tea and fruit basket	
<hr/>	
▪ <b>3-course business lunch at the Schlosswirt</b>	<b>€ 21,50</b>
<hr/>	
▪ <b>3-course dinner at the Schlosswirt</b>	<b>€ 28,50</b>
<hr/>	
▪ <b>Schlosswirt's barbecue</b>	<b>on request</b>

The prices quoted are per person, including statutory VAT, excluding drinks.  
Last changed January 2024



## CATERING DETAILS

### GENERAL

- Meals can be taken either in the restaurants' garden or in a separate room in the restaurant "Schlosswirt".
- If you wish to have breakfast, lunch or dinner in the seminar house or its garden / terrace, we will charge you for this service.

### BUSINESS LUNCH & DINNERS

- Business lunch and dinner exclude drinks.
- We kindly ask for a choice of uniform starters and desserts.
- For the main courses you have the choice between a vegetarian option or a meat/fish option.
- Depending on the season, a barbecue may also be offered.

### SCHLOSSWIRT BREAKFAST

- A rich **breakfast buffet** with fresh, regional and high-quality products awaits you.

## EXAMPLE SEMINAR MENUS

### FROM THE KITCHEN

- Two-meal spread with salted butter and herb gervais;  
Oven-fresh Jourgebäck

♦♦♦

### STARTERS

- Parmesan foam soup
- Tyrolean cheese dumpling soup
- semolina dumpling soup

♦♦♦

### MAIN COURSES

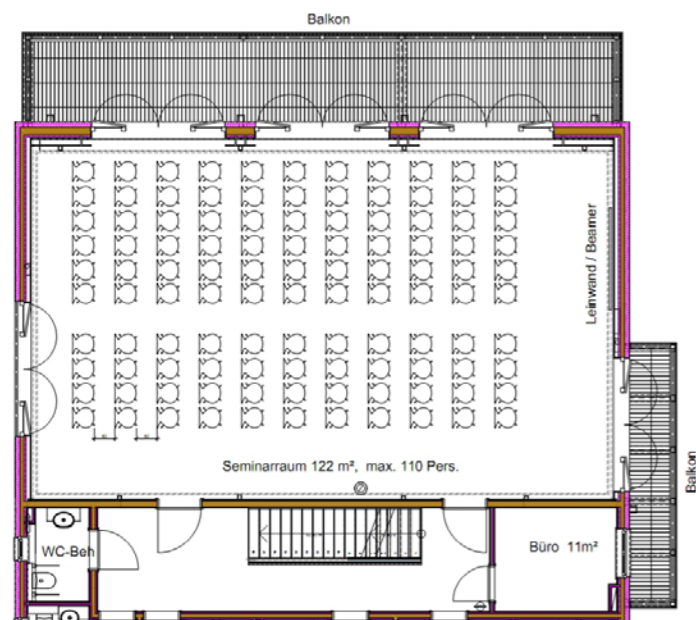
- Grilled salmon steak on leaf spinach and young potatoes with Bernaise sauce
- Stuffed beef cutlet of Grain Fed with mushrooms, Bresaola and wine cheese cooked in the oven with colorful vegetables and potato croquettes
- Duet of saddle of beef and pork tenderloin, potato gratin and vegetable garden
- Mixed fish plate: Salmon, zander, perch on creamy white wine risotto with flower vegetables and white balsamic sauce
- Composition of smoked organic tofu with zucchini, melanzani and tomatoes
- Tyrolean Schltzkräpfen stuffed with spinach curd, stewed tomato and leek

♦♦♦

### DESSERT

- Dessert Variation „Tratzberg Castle“
- blueberry dumplings with vanilla ice cream and advocaat
- curd mousse with vanilla apricots

# SEATING CHARTS



## CINEMA SEATING

Room size	approx. 125 m <sup>2</sup>
Room measurements (L x W x H)	14,36 m x 8,77 m x 6,6 m
Capacity	up to 80 pax



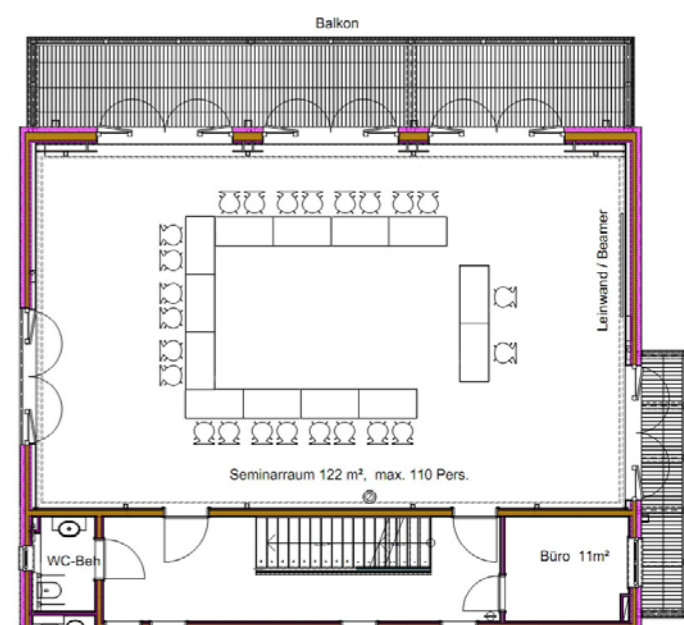
## PARLAMENT SEATING

Room size	approx. 125 m <sup>2</sup>
Room measurements (L x W x H)	14,36 m x 8,77 m x 6,6 m
Capacity	up to 48 people at tables of 2 (140x70cm)



## U-FORM SEATING

Room size	approx. 125 m <sup>2</sup>
Room measurements (L x W x H)	14,36 m x 8,77 m x 6,6 m
Capacity	up to 30 people at tables of 2 (140x70cm)





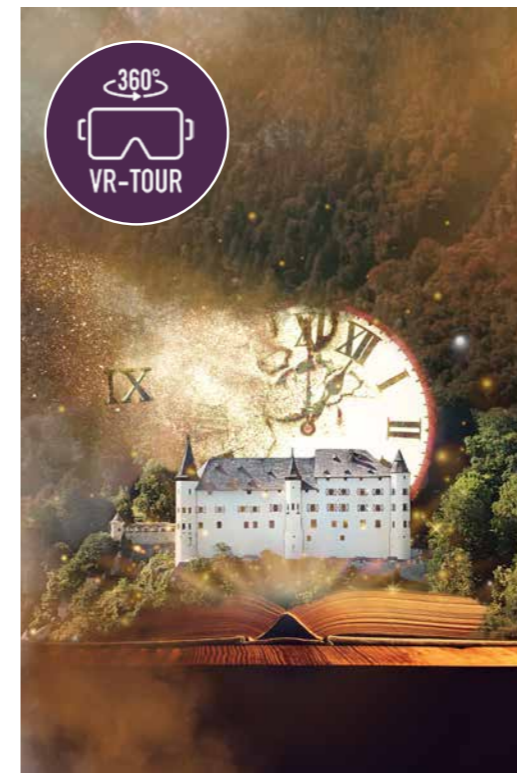
# TRATZBERG CASTLE

## TRAVEL BACK INTO MEDIVAL TIMES

### Experience history first hand

Why read about history when you can travel back in time with us? At the beginning of our tour, you have the opportunity to test our sensational 360° virtual reality adventure and experience „live“ how the former castle of Emperor Maximilian is completely destroyed by fire in 1492. Embark on a journey and witness how today's castle evolved over the centuries and became the Renaissance jewel that has since towered high above the Tyrolean Inn Valley.

Afterwards, our historical VIPs, Emperor Maximilian I, the legendary Fuggers and the Tänzels family of builders, will guide you „personally“ through the original furnished rooms and armories by means of an audio guide. They will recount of times long past, family secrets and an era when emperors and kings still strode through these chambers in which you will linger. Discover secret doors, marvel at the famous Habsburg Hall and learn how history was made here – and still is, because Tratzberg continues to be home to the Count Goëss-Enzenberg family.



## GUIDED TOUR OF THE CASTLE TRATZBERG

- **Duration:** 1 hour  
(Guided tour via audio guide or audio app download)
- **Languages adult tour:**  
D, GB, F, I, ESP, NL, H, JPN, MANDARIN
- **VR Tour as an introduction before the tour**  
(optional, extra charge)
- **Slow train:** „Tratzberg Express“
- Advance booking required

Castle tour adults (per person)	€ 12,00
Slow train (per person / ride)	€ 2,00
<b>Tip: VR tour</b> (extra charge per person)	€ 4,00



## WINE RECEPTION

Whether with business partners, friends or acquaintances – our visitors enjoy South Tyrolean wines from the **vineyards of the Enzenberg Family** (Manincor, South Tyrol) in an exclusive atmosphere (optionally also Prosecco or sparkling wine).

You will arrive with our **slow train „Tratzberg Express“**, leaving right next to the seminar house up to the castle. There, castle employees will welcome you in the beautiful courtyard with a **glass of wine from the Manincor winery**. Afterwards you will experience an exciting **guided tour of the castle**.

On request, snacks can also be served during the wine reception and a musical accompaniment can be organized.

Adults (per person, excl. snack)	€ 32,00
----------------------------------	---------

Prices including VAT.



Renaissance courtyard of Tratzberg Castle



Habsburg Hall with family tree painting



Fugger Chamber



Arcades with a view of the inner courtyard



Queen's room



Armory



OUR  
TIPS  
for you

## EXCURSION TIPS

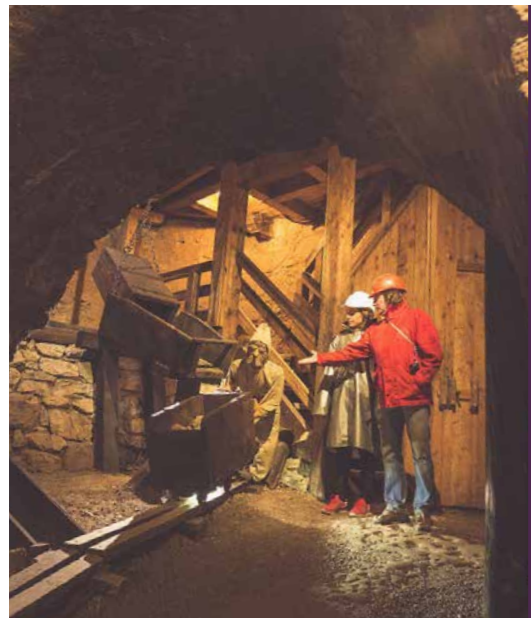
### EXPERIENCE MORE TOGETHER

#### Excursion destinations in the area of Seminarhof Tratzberg

Also outside the castle walls there is a lot to discover. From the historic old town of Rattenberg, the breathtaking silver mine Schwaz, to the adrenaline-filled Airrofan, there is something for everyone! Fun, teambuilding and unique experiences that remain in the memory are pre-programmed here.

Take advantage of the numerous offers of the region and experience seminar moments of a very special kind.

Below we may present our very personal tips for your excursions.



## SILBERBERGWERK

**Schwaz** (approx. 8 km away)

Visit the once largest silver mine in the world and marvel at this unique visitor attraction. The mine train takes you on a journey back in time - up to 800 m deep into the mountain. On a guided tour you will experience the almost 500 year old mining history up close!

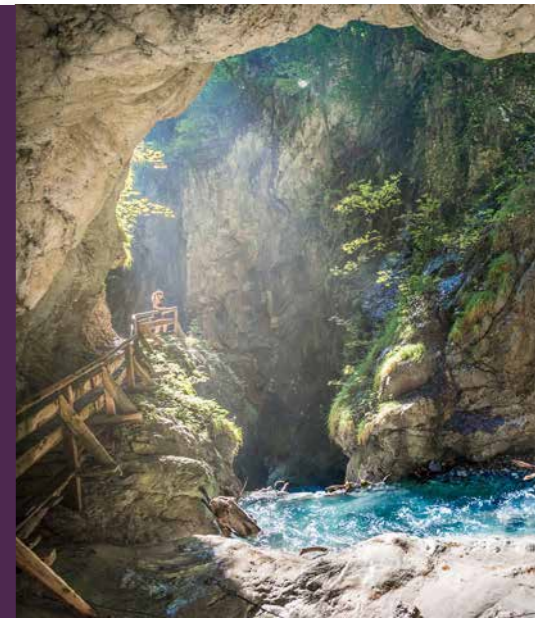
[www.silberbergwerk.at](http://www.silberbergwerk.at)

## WOLFSKLAMM

**Stans** (approx. 3 km away)

The active and natural change for every conference event. Hike the impressive Wolfsklamm - always along the rushing water, 354 Klamm steps up to the oldest pilgrimage site in Tyrol, St. Georgenberg. There, refreshments await you under ancient chestnut trees in the guest garden. (Sturdy shoes and surefootedness required!)

[www.wolfsklamm.tirol](http://www.wolfsklamm.tirol)



## RATTENBERG

**Historical old town** (approx. 20 km away)

The town known as the „glass town“ is today not only the smallest municipality in Austria in terms of area, but also the smallest “city” in the country with only approx. 400 inhabitants. Nevertheless, the beautiful center invites you to stroll around. And if you want even more, you should not miss a guided tour of the town!

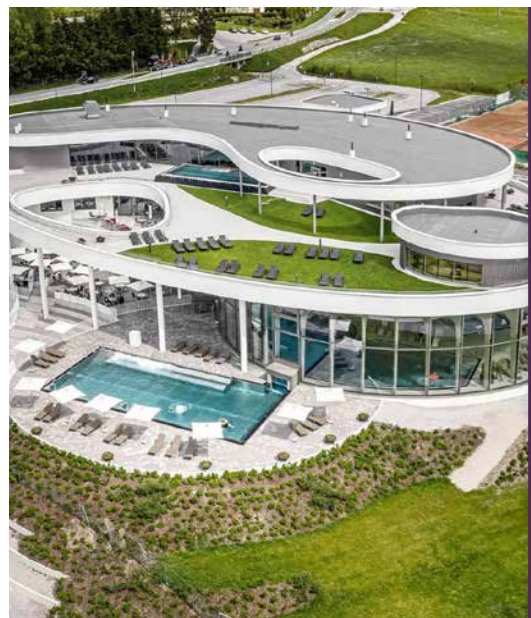
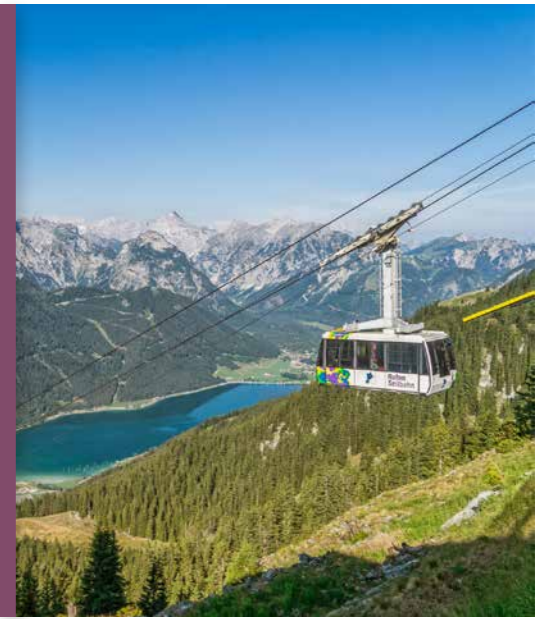
[www.rattenberg.at](http://www.rattenberg.at)

## ROFANSEILBAHN

**Maurach at the Achensee** (approx. 10 km away)

It has to be once - an excursion up to the Tyrolean mountains! The cable car takes you comfortably up to 1,840 meters above sea level. From there the possibilities are endless: Enjoy the view from the „Eagle’s Nest“, panoramic hikes or a little action with the „Skyglider“. Also the stop at a typical alpine pasture should not be missed.

[www.rofanseilbahn.at](http://www.rofanseilbahn.at)



## ATOLL / ACHENSEE

**Maurach at the Achensee** (approx. 10 km away)

Conference and relaxation? Exactly this can be ideally combined! Practically just around the corner, the newly built „Atoll“ on Lake Achensee invites you to relax and unwind on more than 6,500 square meters. A versatile and varied sauna landscape directly at the Achensee will bring you back to other thoughts!

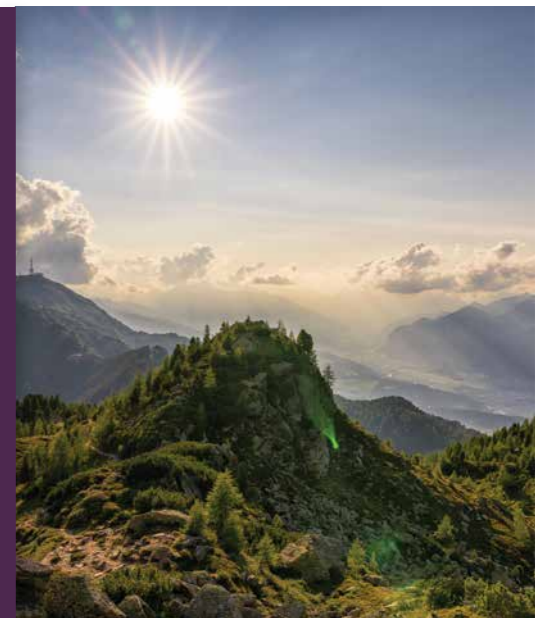
[www.atoll-achensee.com](http://www.atoll-achensee.com)

## ZIRBENWEG / PATSCHERKOFEL

**Innsbruck / Patscherkofelbahn** (approx. 40 km away)

On the trail of the world-famous „Swiss stone pine trees“ - this describes the approx. 7.6 km long, easy hiking trail on the Patscherkofel itself. Experience up to 700 years old stone pines and alpine pleasure in front of about 400 alpine peaks in the surrounding panorama. A MUST for nature fans!

[www.patscherkofelbahn.at/de/sommer/zirbenweg](http://www.patscherkofelbahn.at/de/sommer/zirbenweg)





## LOCATION & ARRIVAL

**Coming from Munich or Salzburg:** via Kufstein continue on the Inntal Highway in the direction Innsbruck until the exit Schwaz. Leave the highway and return in the direction of Stans - through the town Stans until you reach the parking lot of Tratzberg Castle.

**Coming from Innsbruck** take the Inntal Highway in the direction of Kufstein until the exit Schwaz. Continue on the main road through the town of Stans and then approx. 2 km further until you reach the parking lot of Tratzberg Castle.

**Coming via Tegernsee or Bad Tölz:** Along the entire Achensee. In Maurach, after the yellow Jet gas station, turn right down to Jenbach. In Jenbach at the evangelic church (Matin-Luther-Str.) turn right. Follow the road until it turns only left or right. Here, go right and follow this road until you reach the parking lot of Tratzberg Castle on the right.

From the parking lot at Tratzberg Castle it is only a maximum of 3 minutes walk to the Seminar house.

**ATTENTION:** The navi wants to suggest the Tratzberg Siedlung in Jenbach as destination. But this is wrong! The castle is located exactly between Stans and Jenbach. So best is trying to find the castle Tratzberg in the “special destinations” section of your navigation or use google maps on your phone.

## CONTACT



**SEMINARHOF TRATZBERG**  
Gräflich Enzenberg'sche  
Gutsverwaltung  
Tratzberg 4  
A-6200 Jenbach

info@seminarhof-tratzberg.at  
T +43 5242 63 566

[www.seminarhof-tratzberg.at](http://www.seminarhof-tratzberg.at)



**SCHLOSS TRATZBERG**  
Familienstiftung  
Schloss Tratzberg  
Tratzberg 1  
A-6200 Jenbach

info@schloss-tratzberg.at  
T +43 5242 63 566

[www.schloss-tratzberg.at](http://www.schloss-tratzberg.at)



**SCHLOSSWIRT TRATZBERG**  
Tratzberg 3  
A-6200 Jenbach

info@schlosswirt-tratzberg.at  
T +43 5242 673 89

[www.schlosswirt-tratzberg.at](http://www.schlosswirt-tratzberg.at)



[www.seminarhof-tratzberg.at](http://www.seminarhof-tratzberg.at)